



LORETO  
COLLEGE

Marryatville, South Australia

# DIRECTIONS 2023

Educating strong, passionate and confident girls and young women







## From the Principal

Loreto College continues to go from strength to strength; with growing enrolments and award-winning programs in place, we are certainly achieving our strategic objectives to be a 'future looking school' and a 'school of choice and excellence'. Most recently through the Australian Education Awards (for all sectors: Catholic, Independent, Government) we have been recognised through the following achievements:

- Most Innovative School  
(Top 44 schools in Australia, 2022)
- Best School Strategic Plan  
(Top 8 schools in Australia, 2022)
- Best Student Wellbeing Program  
(Top 8 schools in Australia, 2021)
- Department Head of the Year  
(Top 8 schools in Australia,  
and overall national winner, 2021)
- Most Innovative School  
(Top 44 schools in Australia, 2019)

Each year through our Directions document, we convey to the community some of the strategic priorities for the upcoming year, as well as report on projects that have recently been completed.

I hope that you enjoy reading some of our directions and key focus areas for 2023. I also encourage you to read our Strategic Plan 2020-2023 which can be found at:

[www.loreto.sa.edu.au/strategic-plan](http://www.loreto.sa.edu.au/strategic-plan)

**Dr Nicole Archard**

**BA DipEd, MA, MEdLead, MTheoISt, PhD  
Principal**



## Best School Strategic Plan

Spanning more than 400 years, the Loreto education tradition was first inspired by the foundress of the Institute of the Blessed Virgin Mary (IBVM), Mary Ward, and established in the Australian context by Gonzaga Barry IBVM in the late 19th Century. Mary Ward was an inspirational leader, believing passionately that 'women, in time to come, will do much' and that a strong education focused on girls and women would create 'seekers of truth and doers of justice' to take action to improve the world for others.

All Loreto schools in Australia share the same set of values: **freedom, justice, sincerity, verity and felicity**. These values are at the heart of our educational philosophy; they shape our identity and how we interact with others through our words, thoughts, and actions. Loreto schools encapsulate the beliefs and spirit of Mary Ward in delivering an education which inspires strong, passionate, and confident girls and young women. It is these characteristics that you can see most clearly in our girls and is what differentiates us from other schools.

In ensuring we are true to our vision and our 400-year-old tradition of girls' education, Loreto College strives towards two strategic objectives, that is, to be a future looking school and a school of choice and excellence. We are guided

by our Loreto values in the education of girls and young women, we aspire to be leaders in girls' education and to contribute to the broader educational landscape both in Australia and internationally.

Building from a long history of excellence and strong academic performance, the Strategic Plan has the objective of ensuring that Loreto College is a school that defines itself by best practice, and as such, is a school of choice and excellence both now and into the future.

Educating strong, passionate, and confident girls and young women who have the knowledge and skills to make a difference to their world is our core objective. Thus, at the centre of all that we do are our students and their learning and wellbeing outcomes. Our Strategic Plan ensures we continue to be at the forefront of educational research, that we are innovative in our thinking, our teachers are experts in their field, and our College facilities are tailored to deliver optimal learning experiences.

We were honoured to be recognised nationally for our Strategic Plan, this award not only recognises us as a school, but also the hard work of our staff who work tirelessly in achieving the best learning and wellbeing outcomes for the girls in our care.



# Strategic Objectives

## Objective 1

### To be a future looking school

#### A future looking school:

Honours the past, builds from the present, and drives towards an ideal future

Has clear values and beliefs

Has a positive culture amongst staff, students and parents

Has a stimulating learning and physical environment

Is self-reflexive

Is focused on discovery and renewal

Embraces changing contexts in order to grow and develop

Is a leader of best educational practice and uses this to develop others.

## Objective 2

### To be a school of choice and excellence

#### A school of choice and excellence:

Provides structures and practices to ensure all students flourish

Sets clear targets and has high standards and expectations

Researches and undertakes rigorous processes that lead to best practice

Uses data and evidence to set a path for improvement

Invests in developing staff through strategic professional development

Embraces all partners within its community

Has facilities and infrastructure that support educational objectives

Has clear and effective governance.



© Loreto College Marryatville

## Strategic Areas

### LEARNING

We use evidence to drive best practice and a process of continuous learning

### WELLBEING

We understand that student and staff wellbeing facilitates optimum learning conditions

### INNOVATION

We embrace the process of discovery and look for ways to be innovative and creative

### COMMUNITY

We acknowledge the importance of community and our place within a local, national and global context

### MISSION

We understand our social responsibility to the world through thought, action, and Catholic values

### GOVERNANCE

We understand our duty as custodians of Loreto to mitigate risk, act wisely, govern responsibly, and facilitate positive culture





# Technology

Loreto College uses a range of technologies to enhance the administrative, teaching and learning experiences that take place across all areas of the school. Platforms for learning include: Loreto Connect (learning management system), Loreto Analytics (data dashboard and learning analytics), Pulse (student and staff wellbeing tracking), Educator Impact (teacher 360-degree feedback and professional learning), as well as VR, AR, AI technologies and CAD design.

## Lumination Learning Lab

The Lumination Learning Lab is located in the Senior School in the vicinity of the Science Laboratories and the Tinker Lab. The aim of the Lumination Learning Lab is to expose our girls to cutting edge technology, thus enhancing their skills in digital learning through Virtual Reality (VR), Augmented Reality (AR), Extended Reality (ER), and Artificial Intelligence (AI).

Using state of the art headsets, the girls are immersed within their learning environment. Their experience is beamed using an ultra-short-throw projector so that their peers can also see their first-person experience.

LED rings demarcate the user's safe space, matching the boundaries that the girls will see in their headset.

These immersive learning tools are used across subject areas, allowing our girls to travel the world, create their own interactive content, and break down the barriers of the traditional classroom. Using immersive technology our girls gain the skills they need to thrive in their future careers: from technician skills to critical thinking, problem-solving, creativity, communication and collaboration.



# Innovation in Design

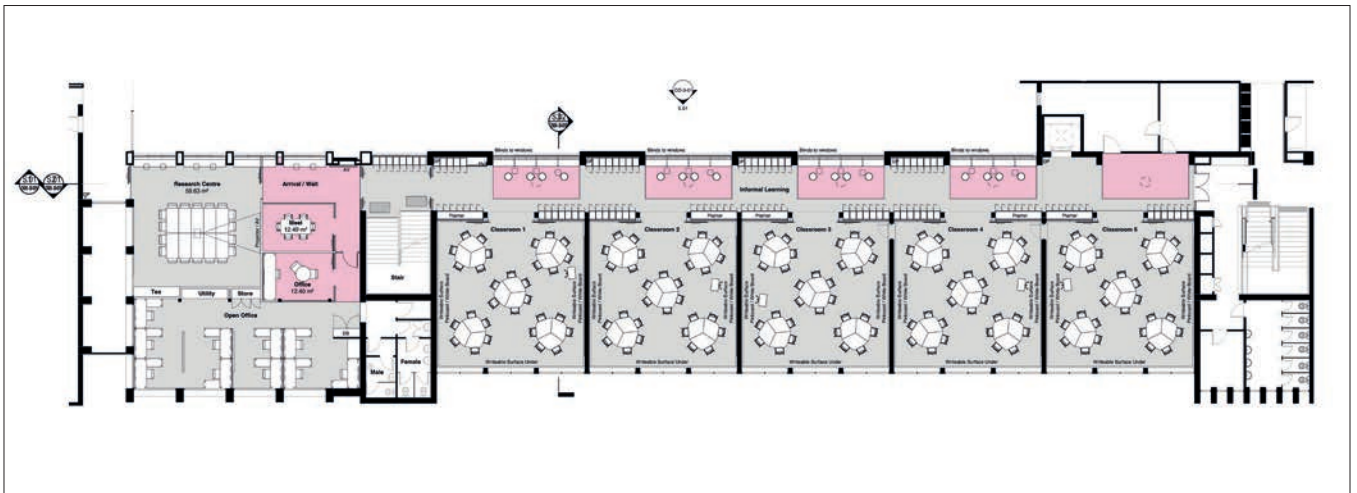
## Mary Ward Building Project

This exciting development will do much to improve a large number of Senior School classrooms and learning areas. The Mary Ward Building Project includes a complete fit-out of two levels of classrooms in the largest Senior School building.

This includes a total of 12 classrooms, including a hub for Year 7 and 8 students to assist with transition to Senior School, as well as a Research Centre for staff and students. The Research Centre will also enable the delivery of post graduate programs for teaching staff via the various South Australian universities.

## Mary Ward - Level 1

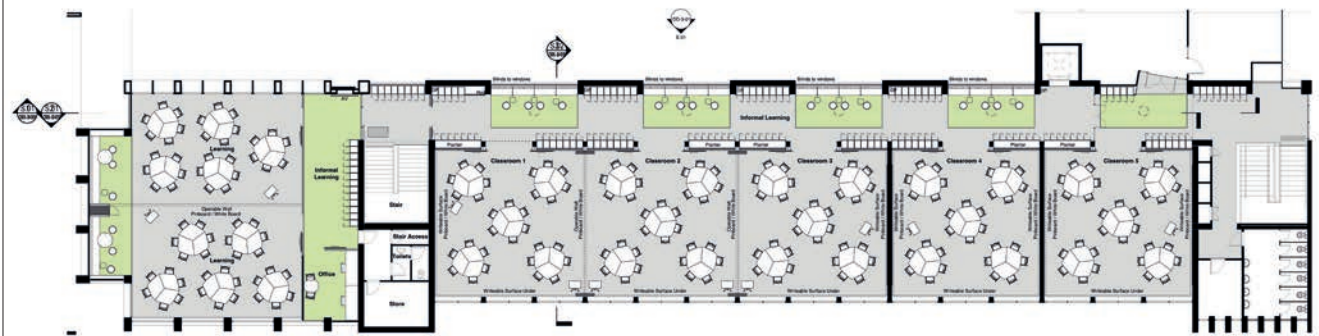
### Research Centre + Multi Purpose Classrooms





## Mary Ward – Level 2

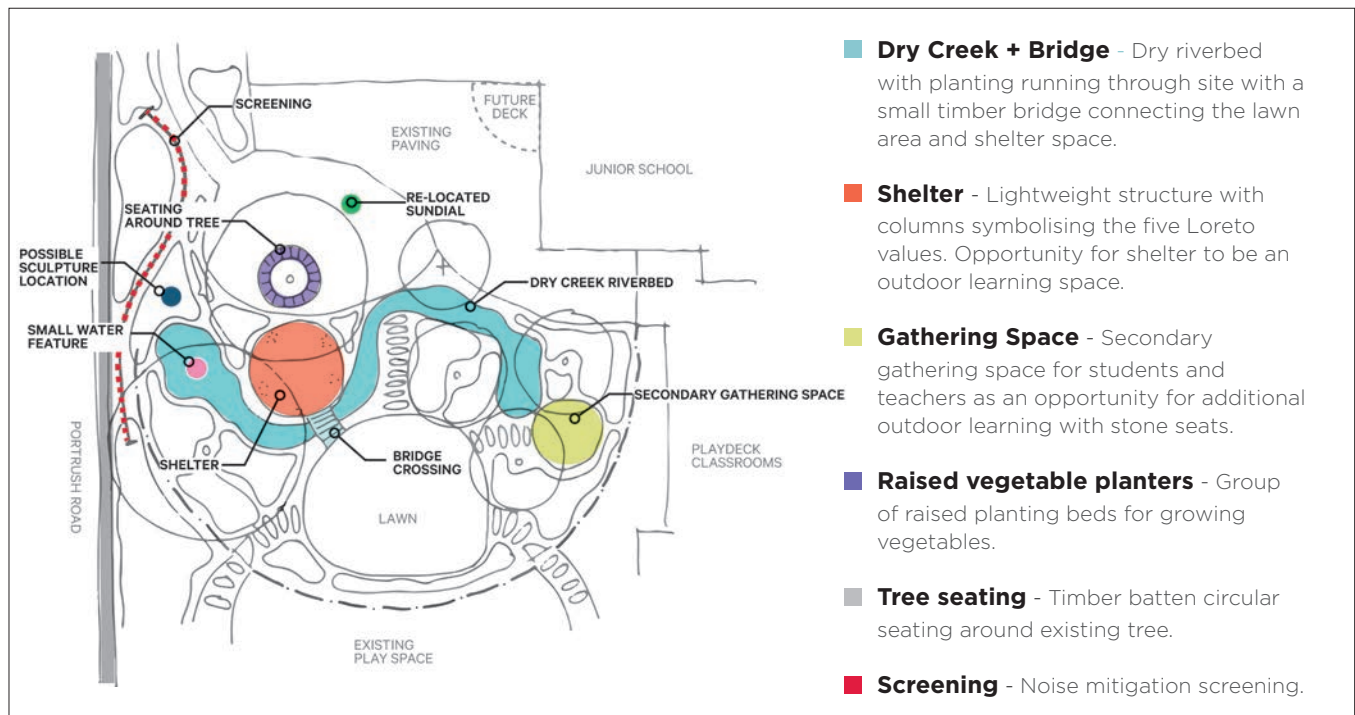
### Years 7 and 8 Learning Centre





# Wellbeing Through Design

## Junior School SEAD Garden



The new Junior School SEAD garden is located adjacent to the Junior School adventure playground. This new garden will provide a place for Junior School children to contemplate and reflect. The five paths, which all lead to a central grass gathering area, will each represent the Loreto values of: Freedom, Justice, Sincerity, Verity and Felicity.

An additional five-sided shelter will also represent these values and include an entrance gate with the welcome sign, **‘Niina marni’**, meaning ‘hello’ or ‘are you well?’ in Kaurua language. Filled with indigenous plants, this garden will represent the coming together of Indigenous culture with the Loreto values.



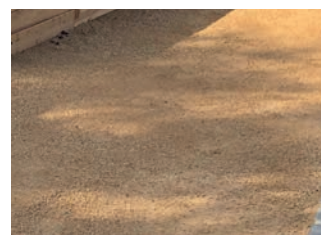
### Seating

Around Existing Tree  
Outdoor Learning Space



### Screening

Natural timber and planting  
utilised as screening



### Compacted Granulitic Sand

Locally sourced compacted  
granulitic sand  
Main meandering garden  
pathways



### Sawdust

Informal Meandering  
Garden Pathways



### Large format cut stone

Set amongst gravel to create  
zen garden



### Wind Chime

Bamboo



### Bridges + Dry Creek

Deer Scare Water Element

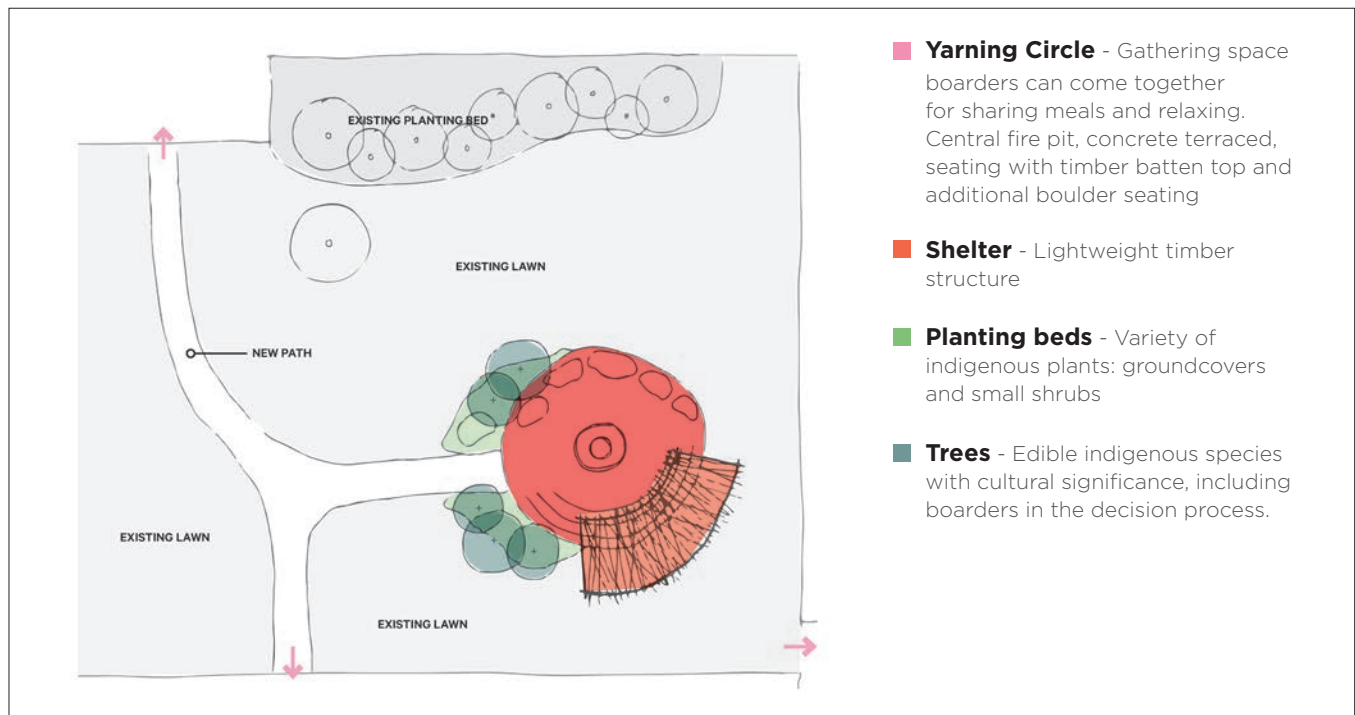


### Raised Planters

Weathered Steel  
Incorporate Existing Sun Dial  
Seasonal Plants



## Boarding Indigenous Yarning Circle and Fire Pit



- **Yarning Circle** - Gathering space  
boarders can come together  
for sharing meals and relaxing.  
Central fire pit, concrete terraced,  
seating with timber batten top and  
additional boulder seating
- **Shelter** - Lightweight timber  
structure
- **Planting beds** - Variety of  
indigenous plants: groundcovers  
and small shrubs
- **Trees** - Edible indigenous species  
with cultural significance, including  
boarders in the decision process.

The Indigenous Yarning Circle and Fire Pit is located in the College Boarding precinct. Designed with the assistance of Loreto College Indigenous students, this project has the aim of recognising the importance of Indigenous culture as well as sharing this with others through education.

The seating area provides a space for Boarders, other students, staff, and community to come together to share stories, whilst the fire pit provides warmth as well as a source of food.



### Shelter

Lightweight steel structure  
with timber elements  
Lighting opportunity  
Incorporation of climbing plants



### Rock seats

Natural local stone  
placed rock



### Log Seats

Informal Gathering Spaces



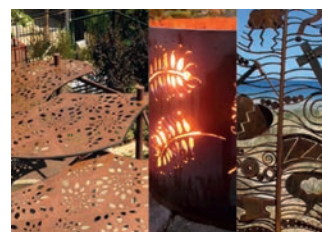
### Terraced Seating/ Mounded Earth

Concrete Seating Terrace  
With Timber Top



### Yarning Circle

Seating Terrace Around Fire  
Pit For Informal Gathering  
And Special Occasions



### Student Artwork

Student Artwork Lasercut Into  
Fire Pit



### Concrete Design

Student Handprints Acid  
Etched Inlay









## Building Connections

### Middle Primary Learning Centre

In 2022 we completed our Middle Primary Learning Centre. This new space provides four interconnected classrooms as well as indoor and outdoor breakout areas and a large wet area for creative learning activities.



### Felicity Café

In 2022 we completed the first phase of Felicity Café, providing Senior School girls with a large and beautiful space to sit to eat as well as enjoy each other's company. The name 'Felicity' was chosen by the girls as they wanted the café to be a place of joy and happiness. In 2023, we will complete the second phase of the project by remodelling the kitchen and serving areas as well as extending the menu and operating hours to include breakfast for the girls and their families.







## Middle Primary Learning Centre







Fitness Room



Felicity Café





LORETO  
COLLEGE

Marryatville, South Australia

**Educating strong, passionate and  
confident girls and young women.**

A Catholic day and boarding school for girls from Early Learning to Year 12

An independent day and boarding school for girls from Early Learning to Year 12  
316 Portrush Road, Marryatville, South Australia 5068

WE WELCOME EXPRESSIONS OF GRATITUDE: [gratitude@loreto.sa.edu.au](mailto:gratitude@loreto.sa.edu.au)

T | 08 8334 4200

[www.loreto.sa.edu.au](http://www.loreto.sa.edu.au)